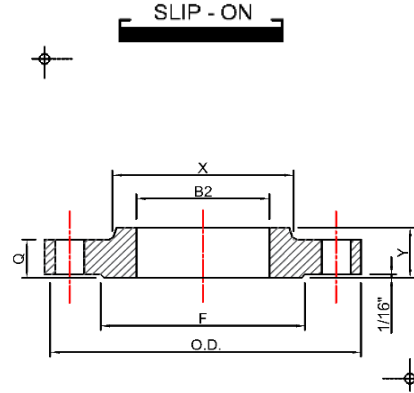


Project Name: \_\_\_\_\_  
 Job #: \_\_\_\_\_

## CLASS 125 SLIP-ON FLANGES

### ASME B16.9 & ASTM A234 WPB



Source:  Import  Domestic  Approved

### DIMENSIONS

UOM: Inches/LBS

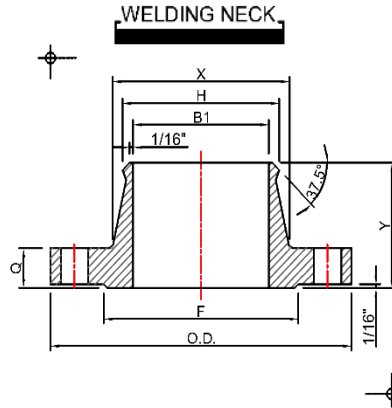
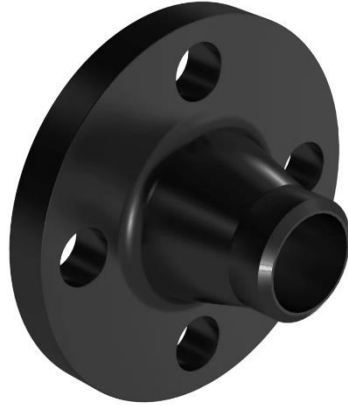
PIPE SIZE	COMMON DIMENSIONS				LENGTH THROUGH HUB	BORE	DIAMETER OF HUB AT BEVEL (H)	APPOX WEIGHT IN POUNDS	DRILLING TEMPLATE			
	OUTSIDE DIAMETER (O.D.)	THICKNESS (O)	DIAMETER AT BASE OF HUB (X)						DIAMETER OF BOLT CIRCLE	NUMBER OF BOLT HOLES	DIAMETER OF BOLT HOLES	DIAMETER OF BOLTS
30	38.75	2.13	32.75		3.50	30.19	30.00	305.00	36.00	28	1 3/8	1 1/4
36	46.00	2.38	39.25		3.75	36.19	36.00	450.00	42.75	32	1 5/8	1 1/2
42	53.00	2.63	46.00		4.00	42.19	42.00	650.00	49.50	36	1 5/8	1 1/2
48	59.50	2.75	52.25		4.13	48.19	48.00	800.00	56.00	44	1 5/8	1 1/2
54	66.25	3.00	58.75		4.34	54.19	54.00	1025.00	62.75	44	2	1 3/4
60	73.00	3.13	65.25		4.50	60.19	60.00	1250.00	69.75	52	2	1 3/4

FLANGES 125 - SLIP ON

Project Name: \_\_\_\_\_  
 Job #: \_\_\_\_\_

**CLASS 125 WELDNECK FLANGES**  
**ASME B16.9 & ASTM A234 WPB**

FLANGES 125 - WELDNECK



Source:  Import  Domestic  Approved

**DIMENSIONS**

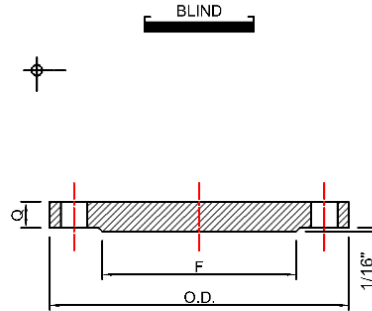
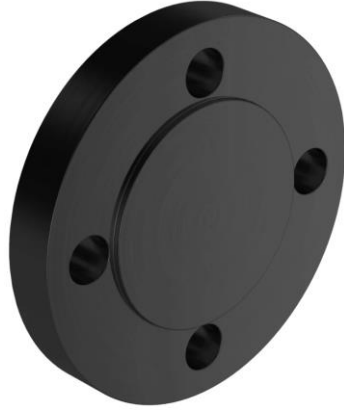
UOM: Inches/LBS

PIPE SIZE	COMMON DIMENSIONS				BORE	DIAMETER OF HUB AT BEVEL (H)	APPOX WEIGHT IN POUNDS	DRILLING TEMPLATE			
	OUTSIDE DIAMETER (O.D.)	THICKNESS (O)	DIAMETER AT BASE OF HUB (X)	LENGTH THROUGH HUB				DIAMETER OF BOLT CIRCLE	NUMBER OF BOLT HOLES	DIAMETER OF BOLT HOLES	DIAMETER OF BOLTS
30	38.75	2.13	32.75	5.13	TO BE SPECIFIED BY PURCHASER.	30.00	340.00	36.00	28	1 3/8	1 1/4
36	46.00	2.38	39.25	5.38		36.00	495.00	42.75	32	1 5/8	1 1/2
42	53.00	2.63	46.00	5.63		42.00	710.00	49.50	36	1 5/8	1 1/2
48	59.50	2.75	52.25	5.75		48.00	870.00	56.00	44	1 5/8	1 1/2
54	66.25	3.00	58.75	6.00		54.00	1100.00	62.75	44	2	1 3/4
60	73.00	3.13	65.25	6.13		60.00	1350.00	69.75	52	2	1 3/4

Project Name: \_\_\_\_\_  
 Job #: \_\_\_\_\_

## CLASS 150 BLIND FLANGES

### ASME B16.9 & ASTM A234 WPB



Source:  Import  Domestic  Approved

### DIMENSIONS

UOM: Inches/LBS

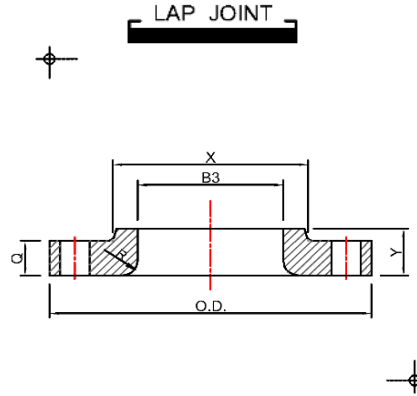
PIPE SIZE	OUTSIDE DIAMETER OF FLANGE (O.D.)	THICKNESS OF FLANGE (Min.) (Q)	
<b>ASME B16.5</b>			
1/2	3.50	0.38	
3/4	3.88	0.44	
1	4.25	0.50	
1 1/4	4.62	0.56	
1 1/2	5.00	0.62	
2	6.00	0.69	
2 1/2	7.00	0.81	
3	7.50	0.88	
3 1/2	8.50	0.88	
4	9.00	0.88	
5	10.00	0.88	
6	11.00	0.94	
8	13.50	1.06	
10	16.00	1.12	
12	19.00	1.19	
14	21.00	1.31	
16	23.50	1.38	
18	25.00	1.50	
20	27.50	1.62	
24	32.00	1.81	
		<b>WN</b>	<b>BLD</b>
30	38.75	2.88	2.88
36	46.00	3.50	3.50
42	53.00	3.75	3.75
48	59.50	4.19	4.19
		<b>WN</b>	<b>BLD</b>
30	34.94	1.69	1.94
36	41.62	2.00	2.25
42	48.25	2.25	2.65
48	54.81	2.50	3.00

**FLANGES 150 - BLIND**

Project Name: \_\_\_\_\_  
 Job #: \_\_\_\_\_

## CLASS 150 LAP JOINT FLANGES

### ASME B16.9 & ASTM A234 WPB



Source:  Import  Domestic  Approved

### DIMENSIONS

UOM: Inches/LBS

PIPE SIZE	OUTSIDE DIAMETER OF FLANGE (O.D.)	THICKNESS OF FLANGE (Min.) (Q)		THICKNESS OF LAPJOINT (Min.) (Q)	DIAMETER OF HUB (X)	LENGTH THROUGH HUB	BORE	LAP JOINT RADIUS (R)
ASME B16.5								
1/2	3.50	0.38	0.44	0.44	1.19	0.62	0.90	0.12
3/4	3.88	0.44	0.50	0.50	1.50	0.62	1.11	0.12
1	4.25	0.50	0.56	0.56	1.94	0.69	1.38	0.12
1 1/4	4.62	0.56	0.62	0.62	2.31	0.81	1.72	0.19
1 1/2	5.00	0.62	0.69	0.69	2.56	0.88	1.97	0.25
2	6.00	0.69	0.75	0.75	3.06	1.00	2.46	0.31
2 1/2	7.00	0.81	0.88	0.88	3.56	1.12	2.97	0.31
3	7.50	0.88	0.94	0.94	4.25	1.19	3.60	0.38
3 1/2	8.50	0.88	0.94	0.94	4.81	1.25	4.10	0.38
4	9.00	0.88	0.94	0.94	5.31	1.31	4.60	0.44
5	10.00	0.88	0.94	0.94	6.44	1.44	5.69	0.44
6	11.00	0.94	1.00	1.00	7.56	1.56	6.75	0.50
8	13.50	1.06	1.12	1.12	9.69	1.75	8.75	0.50
10	16.00	1.12	1.19	1.19	12.00	1.94	10.92	0.50
12	19.00	1.19	1.25	1.25	14.38	2.19	12.92	0.50
14	21.00	1.31	1.38	1.38	15.75	3.12	14.18	0.50
16	23.50	1.38	1.44	1.44	18.00	3.44	16.19	0.50
18	25.00	1.50	1.56	1.56	19.88	3.81	18.20	0.50
20	27.50	1.62	1.69	1.69	22.00	4.06	20.25	0.50
24	32.00	1.81	1.88	1.88	26.12	4.38	24.25	0.50
		WN	BLD	ASME B16.47 SERIES A				
30	38.75	2.88	3.50		30.75			
36	46.00	3.50	3.50		36.75			
42	53.00	3.75	3.75		43.00			
48	59.50	4.19	4.19		49.12			
		WN	BLD	ASME B16.47 SERIES B				
30	34.94	1.69	1.94		31.00			
36	41.62	2.00	2.25		37.19			
42	48.25	2.25	2.65		43.38			
48	54.81	2.50	3.00		49.50			

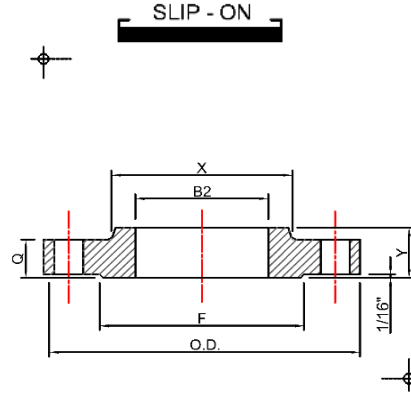
FLANGES 150 - LAP JOINT

Project Name: \_\_\_\_\_

Job #: \_\_\_\_\_

## CLASS 150 SLIP - ON FLANGES

ASME B16.9 & ASTM A234 WPB



Source:  Import  Domestic  Approved

### DIMENSIONS

UOM: Inches/LBS

PIPE SIZE	OUTSIDE DIAMETER OF FLANGE (O.D.)	THICKNESS OF FLANGE (Min.) (Q)		DIAMETER OF HUB (X)	LENGTH THROUGH HUB	BORE
<b>ASME B16.5</b>						
1/2	3.50	0.38		1.19	0.56	0.88
3/4	3.88	0.44		1.50	0.56	1.09
1	4.25	0.50		1.94	0.62	1.36
1 1/4	4.62	0.56		2.31	0.75	1.70
1 1/2	5.00	0.62		2.56	0.81	1.95
2	6.00	0.69		3.06	0.94	2.44
2 1/2	7.00	0.81		3.56	1.06	2.94
3	7.50	0.88		4.25	1.12	3.57
3 1/2	8.50	0.88		4.81	1.25	4.07
4	9.00	0.88		5.31	1.38	4.57
5	10.00	0.88		6.44	1.50	5.66
6	11.00	0.94		7.56	1.69	6.72
8	13.50	1.06		9.69	1.69	8.72
10	16.00	1.12		12.00	1.88	10.88
12	19.00	1.19		14.38	2.12	12.88
14	21.00	1.31		15.75	2.19	14.14
16	23.50	1.38		18.00	2.44	16.16
18	25.00	1.50		19.88	2.62	18.18
20	27.50	1.62		22.00	2.81	20.20
24	32.00	1.81		26.12	3.19	24.25
		<b>WN</b>	<b>BLD</b>		<b>ASME B16.47 SERIES A</b>	
30	38.75	2.88	2.88	30.75		
36	46.00	3.50	3.50	36.75		
42	53.00	3.75	3.75	43.00		
48	59.50	4.19	4.19	49.12		
		<b>WN</b>	<b>BLD</b>		<b>ASME B16.47 SERIES B</b>	
30	34.94	1.69	1.94	31.00		
36	41.62	2.00	2.25	37.19		
42	48.25	2.25	2.65	43.38		
48	54.81	2.50	3.00	49.50		

FLANGES 150 - SLIP - ON

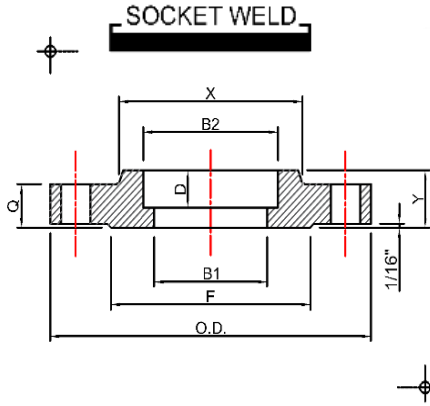
Project Name: \_\_\_\_\_

Job #: \_\_\_\_\_

## CLASS 150 SOCKET WELD FLANGES

ASME B16.9 & ASTM A234 WPB

FLANGES 150 - SOCKET WELD



Source:  Import  Domestic  Approved

### DIMENSIONS

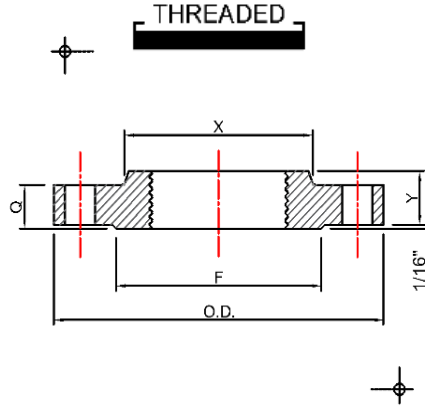
UOM: Inches/LBS

PIPE SIZE	OUTSIDE DIAMETER OF FLANGE (O.D.)	THICKNESS OF FLANGE (Min.) (Q)		DIAMETER OF HUB (X)	LENGTH THROUGH HUB	BORE	DEPTH OF SOCKET (D)
<b>ASME B16.5</b>							
1/2	3.50	0.38		1.19	0.56	0.88	0.38
3/4	3.88	0.44		1.50	0.56	1.09	0.44
1	4.25	0.50		1.94	0.62	1.36	0.50
1 1/4	4.62	0.56		2.31	0.75	1.70	0.56
1 1/2	5.00	0.62		2.56	0.81	1.95	0.62
2	6.00	0.69		3.06	0.94	2.44	0.69
2 1/2	7.00	0.81		3.56	1.06	2.94	0.75
3	7.50	0.88		4.25	1.12	3.57	0.81
3 1/2	8.50	0.88		4.81	1.25	4.07	
4	9.00	0.88		5.31	1.38	4.57	
5	10.00	0.88		6.44	1.50	5.66	
6	11.00	0.94		7.56	1.69	6.72	
8	13.50	1.06		9.69	1.69	8.72	
10	16.00	1.12		12.00	1.88	10.88	
12	19.00	1.19		14.38	2.12	12.88	
14	21.00	1.31		15.75	2.19	14.14	
16	23.50	1.38		18.00	2.44	16.16	
18	25.00	1.50		19.88	2.62	18.18	
20	27.50	1.62		22.00	2.81	20.20	
24	32.00	1.81		26.12	3.19	24.25	
		WN	BLD	<b>ASME B16.47 SERIES A</b>			
30	38.75	2.88	2.88	30.75			
36	46.00	3.50	3.50	36.75			
42	53.00	3.75	3.75	43.00			
48	59.50	4.19	4.19	49.12			
		WN	BLD	<b>ASME B16.47 SERIES B</b>			
30	34.94	1.69	1.94	31.00			
36	41.62	2.00	2.25	37.19			
42	48.25	2.25	2.65	43.38			
48	54.81	2.50	3.00	49.50			

Project Name: \_\_\_\_\_  
 Job #: \_\_\_\_\_

## CLASS 150 THREADED FLANGES

### ASME B16.9 & ASTM A234 WPB



Source:  Import  Domestic  Approved

## DIMENSIONS

UOM: Inches/LBS

PIPE SIZE	OUTSIDE DIAMETER OF FLANGE (O.D.)	THICKNESS OF FLANGE (Min.) (Q)		DIAMETER OF HUB (X)	LENGTH THROUGH HUB	THREAD LENGTH (Min.)	BORE
ASME B16.5							
1/2	3.50	0.38		1.19	0.56	0.62	0.88
3/4	3.88	0.44		1.50	0.56	0.62	1.09
1	4.25	0.50		1.94	0.62	0.69	1.36
1 1/4	4.62	0.56		2.31	0.75	0.81	1.70
1 1/2	5.00	0.62		2.56	0.81	0.88	1.95
2	6.00	0.69		3.06	0.94	1.00	2.44
2 1/2	7.00	0.81		3.56	1.06	1.12	2.94
3	7.50	0.88		4.25	1.12	1.19	3.57
3 1/2	8.50	0.88		4.81	1.25	1.25	4.07
4	9.00	0.88		5.31	1.38	1.31	4.57
5	10.00	0.88		6.44	1.50	1.44	5.66
6	11.00	0.94		7.56	1.69	1.56	6.72
8	13.50	1.06		9.69	1.69	1.75	8.72
10	16.00	1.12		12.00	1.88	1.94	10.88
12	19.00	1.19		14.38	2.12	2.19	12.88
14	21.00	1.31		15.75	2.19	2.25	14.14
16	23.50	1.38		18.00	2.44	2.50	16.16
18	25.00	1.50		19.88	2.62	2.69	18.18
20	27.50	1.62		22.00	2.81	2.88	20.20
24	32.00	1.81		26.12	3.19	3.25	24.25
		WN	BLD	ASME B16.47 SERIES A			
30	38.75	2.88	2.88	30.75			
36	46.00	3.50	3.50	36.75			
42	53.00	3.75	3.75	43.00			
48	59.50	4.19	4.19	49.12			
		WN	BLD	ASME B16.47 SERIES B			
30	34.94	1.69	1.94	31.00			
36	41.62	2.00	2.25	37.19			
42	48.25	2.25	2.65	43.38			
48	54.81	2.50	3.00	49.50			

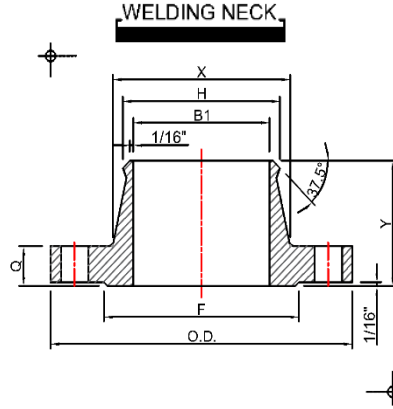
FLANGES 150 - THREADED

Project Name: \_\_\_\_\_

Job #: \_\_\_\_\_

## CLASS 150 WELD NECK FLANGES

ASME B16.9 & ASTM A234 WPB



Source:  Import  Domestic  Approved

### DIMENSIONS

UOM: Inches/LBS

PIPE SIZE	OUTSIDE DIAMETER OF FLANGE (O.D.)	THICKNESS OF FLANGE (Min.) (Q)		DIAMETER OF HUB (X)	DIAMETER OF WELD NECK (B3)	LENGTH THROUGH HUB	BORE
<b>ASME B16.5</b>							
1/2	3.50	0.38		1.19	0.84	1.81	0.62
3/4	3.88	0.44		1.50	1.05	2.00	0.82
1	4.25	0.50		1.94	1.32	2.12	1.05
1 1/4	4.62	0.56		2.31	1.66	2.19	1.38
1 1/2	5.00	0.62		2.56	1.90	2.38	1.61
2	6.00	0.69		3.06	2.38	2.44	2.07
2 1/2	7.00	0.81		3.56	2.88	2.69	2.47
3	7.50	0.88		4.25	3.50	2.69	3.07
3 1/2	8.50	0.88		4.81	4.00	2.75	3.55
4	9.00	0.88		5.31	4.50	2.94	4.03
5	10.00	0.88		6.44	5.56	3.44	5.05
6	11.00	0.94		7.56	6.63	3.44	6.07
8	13.50	1.06		9.69	8.63	3.94	7.98
10	16.00	1.12		12.00	10.75	4.44	10.02
12	19.00	1.19		14.38	12.75	4.94	12.00
14	21.00	1.31		15.75	14.00	4.94	13.25
16	23.50	1.38		18.00	16.00	4.94	15.25
18	25.00	1.50		19.88	18.00	5.44	17.25
20	27.50	1.62		22.00	20.00	5.62	19.25
24	32.00	1.81		26.12	24.00	5.94	23.25
		WN	BLD	<b>ASME B16.47 SERIES A</b>			
30	38.75	2.88	2.88	30.75	30.00	5.32	
36	46.00	3.50	3.50	36.75	36.00	6.13	
42	53.00	3.75	3.75	43.00	42.00	6.69	
48	59.50	4.19	4.19	49.12	48.00	7.50	
		WN	BLD	<b>ASME B16.47 SERIES B</b>			
30	34.94	1.69	1.94	31.00	30.06	3.88	
36	41.62	2.00	2.25	37.19	36.06	4.57	
42	48.25	2.25	2.65	43.38	42.12	5.19	
48	54.81	2.50	3.00	49.50	48.12	5.82	

FLANGES 150 - WELDNECK

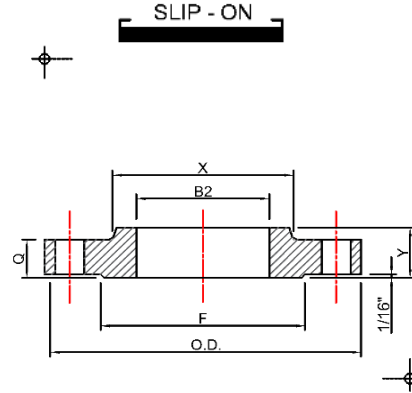


Project Name: \_\_\_\_\_

Job #: \_\_\_\_\_

## CLASS 300 SLIP - ON FLANGES

ASME B16.9 & ASTM A234 WPB



Source:  Import  Domestic  Approved

### DIMENSIONS

UOM: Inches/LBS

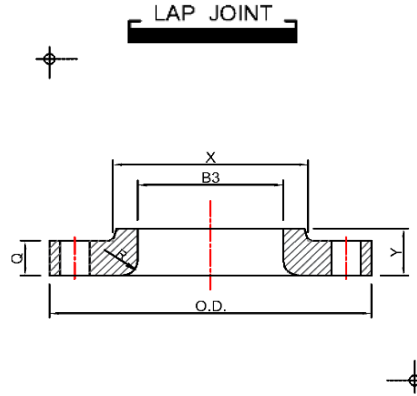
PIPE SIZE	OUTSIDE DIAMETER OF FLANGE (O.D.)	THICKNESS OF FLANGE (Min.) (Q)		DIAMETER OF HUB (X)	LENGTH THROUGH HUB	BORE
<b>ASME B16.5</b>						
1/2	3.75	0.50		1.50	0.81	0.88
3/4	4.62	0.56		1.88	0.94	1.09
1	4.88	0.62		2.12	1.00	1.36
1 1/4	5.25	0.69		2.50	1.00	1.70
1 1/2	6.12	0.75		2.75	1.13	1.95
2	6.50	0.81		3.31	1.25	2.44
2 1/2	7.50	0.94		3.94	1.44	2.94
3	8.25	1.06		4.62	1.63	3.57
3 1/2	9.00	1.12		5.25	1.69	4.07
4	10.00	1.19		5.75	1.82	4.57
5	11.00	1.31		7.00	1.94	5.66
6	12.50	1.38		8.12	2.00	6.72
8	15.00	1.56		10.25	2.38	8.72
10	17.50	1.81		12.62	2.56	10.88
12	20.50	1.94		14.75	2.82	12.88
14	23.00	2.06		16.75	2.94	14.14
16	25.50	2.19		19.00	3.19	16.16
18	28.00	2.31		21.00	3.44	18.18
20	30.50	2.44		23.12	3.69	20.20
24	36.00	2.69		27.62	4.13	24.25
		<b>WN</b>	<b>BLD</b>		<b>ASME B16.47 SERIES A</b>	
30	43.00	3.57	3.69	32.56		
36	50.00	4.07	4.32	39.00		
42	50.75	4.63	4.63	43.25		
48	57.75	5.19	5.19	49.38		
		<b>WN</b>	<b>BLD</b>		<b>ASME B16.47 SERIES B</b>	
30	39.00	3.63	3.63	32.00		
36	46.12	4.00	4.00	38.00		
42	52.50	4.63	4.63	44.00		
48	59.50	5.00	5.00	50.31		

**FLANGES 300 - SLIP - ON**

Project Name: \_\_\_\_\_  
 Job #: \_\_\_\_\_

## CLASS 600 LAP JOINT FLANGES

### ASME B16.9 & ASTM A234 WPB



Source:  Import  Domestic  Approved

### DIMENSIONS

UOM: Inches/LBS

PIPE SIZE	OUTSIDE DIAMETER OF FLANGE (O.D.)	THICKNESS OF FLANGE (Min.) (Q)		DIAMETER OF HUB (X)	LENGTH THROUGH HUB	BORE	LAPPED FLANGE RADIUS (R)
<b>ASME B16.5</b>							
1/2	3.75	0.56		1.50	0.88	0.90	0.12
3/4	4.62	0.62		1.88	1.00	1.11	0.12
1	4.88	0.69		2.12	1.06	1.38	0.12
1 1/4	5.25	0.81		2.50	1.12	1.72	0.19
1 1/2	6.12	0.88		2.75	1.25	1.97	0.25
2	6.50	1.00		3.31	1.44	2.46	0.31
2 1/2	7.50	1.12		3.94	1.62	2.97	0.31
3	8.25	1.25		4.62	1.81	3.60	0.38
3 1/2	9.00	1.38		5.25	1.94	4.10	0.38
4	10.75	1.50		6.00	2.12	4.60	0.44
5	13.00	1.75		7.44	2.38	5.69	0.44
6	14.00	1.88		8.75	2.62	6.75	0.50
8	16.50	2.19		10.75	3.00	8.75	0.50
10	20.00	2.50		13.50	4.38	10.92	0.50
12	22.00	2.62		15.75	4.62	12.92	0.50
14	23.75	2.75		17.00	5.00	14.18	0.50
16	27.00	3.00		19.50	5.50	16.19	0.50
18	29.25	3.25		21.50	6.00	18.20	0.50
20	32.00	3.50		24.00	6.50	20.25	0.50
24	37.00	4.00		28.25	7.25	24.25	0.50
		WN	BLD		<b>ASME B16.47 SERIES A</b>		
30	44.50	4.50	5.50	33.94			
36	51.75	4.88	6.38	40.62			
42	55.25	6.62	6.75	44.38			
48	62.75	7.44	7.69	50.75			
		WN	BLD		<b>ASME B16.47 SERIES B</b>		
30	40.25	4.94	5.00	31.75			
36	47.75	5.75	5.94	38.12			
42							
48							

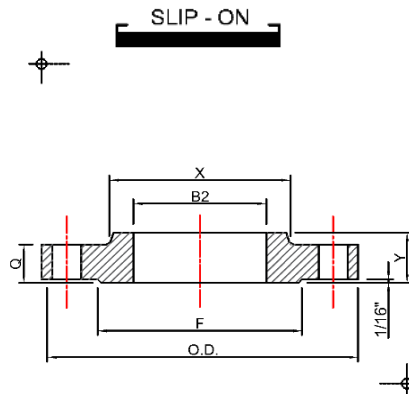
FLANGES 600 - LAP JOINT

Project Name: \_\_\_\_\_

Job #: \_\_\_\_\_

## CLASS 600 SLIP - ON FLANGES

ASME B16.9 & ASTM A234 WPB



Source:  Import  Domestic  Approved

### DIMENSIONS

UOM: Inches/LBS

PIPE SIZE	OUTSIDE DIAMETER OF FLANGE (O.D.)	THICKNESS OF FLANGE (Min.) (Q)		DIAMETER OF HUB (X)	LENGTH THROUGH HUB	BORE
<b>ASME B16.5</b>						
1/2	3.75	0.56		1.50	0.88	0.88
3/4	4.62	0.62		1.88	1.00	1.09
1	4.88	0.69		2.12	1.06	1.36
1 1/4	5.25	0.81		2.50	1.12	1.70
1 1/2	6.12	0.88		2.75	1.25	1.95
2	6.50	1.00		3.31	1.44	2.44
2 1/2	7.50	1.12		3.94	1.62	2.94
3	8.25	1.25		4.62	1.81	3.57
3 1/2	9.00	1.38		5.25	1.94	4.07
4	10.75	1.50		6.00	2.12	4.57
5	13.00	1.75		7.44	2.38	5.66
6	14.00	1.88		8.75	2.62	6.72
8	16.50	2.19		10.75	3.00	8.72
10	20.00	2.50		13.50	3.38	10.88
12	22.00	2.62		15.75	3.62	12.88
14	23.75	2.75		17.00	3.69	14.14
16	27.00	3.00		19.50	4.19	16.16
18	29.25	3.25		21.50	4.62	18.18
20	32.00	3.50		24.00	5.00	20.20
24	37.00	4.00		28.25	5.50	24.25
		<b>WN</b>	<b>BLD</b>		<b>ASME B16.47 SERIES A</b>	
30	44.50	4.50	5.50	33.94		
36	51.75	4.88	6.38	40.62		
42	55.25	6.62	6.75	44.38		
48	62.75	7.44	7.69	50.75		
		<b>WN</b>	<b>BLD</b>		<b>ASME B16.47 SERIES B</b>	
30	40.25	4.94	5.00	31.75		
36	47.75	5.75	5.94	38.12		
42						
48						

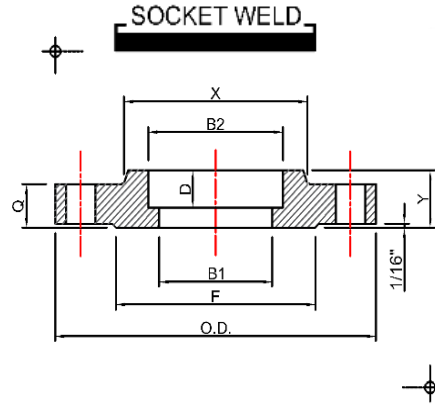
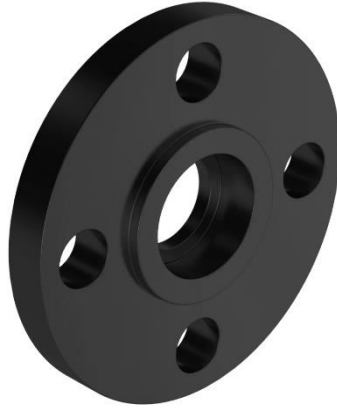
FLANGES 600 - SLIP - ON

Project Name: \_\_\_\_\_  
 Job #: \_\_\_\_\_

## CLASS 600 SOCKET WELD FLANGES

### ASME B16.9 & ASTM A234 WPB

**FLANGES 600 - SOCKET WELD**



Source:  Import  Domestic  Approved

## DIMENSIONS

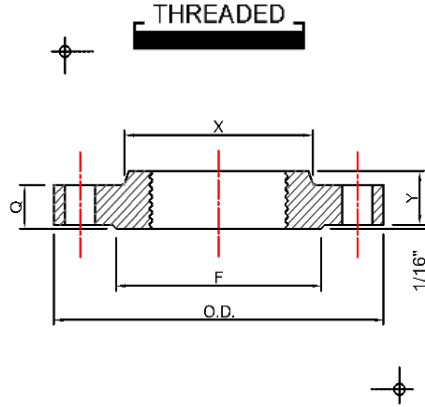
UOM: Inches/LBS

PIPE SIZE	OUTSIDE DIAMETER OF FLANGE (O.D.)	THICKNESS OF FLANGE (Min.) (Q)		DIAMETER OF HUB (X)	LENGTH THROUGH HUB	BORE	DEPTH OF SOCKET (D)
<b>ASME B16.5</b>							
1/2	3.75	0.56		1.50	0.88	0.88	0.38
3/4	4.62	0.62		1.88	1.00	1.09	0.44
1	4.88	0.69		2.12	1.06	1.36	0.50
1 1/4	5.25	0.81		2.50	1.12	1.70	0.56
1 1/2	6.12	0.88		2.75	1.25	1.95	0.62
2	6.50	1.00		3.31	1.44	2.44	0.69
2 1/2	7.50	1.12		3.94	1.62	2.94	0.75
3	8.25	1.25		4.62	1.81	3.57	0.81
3 1/2	9.00	1.38		5.25	1.94	4.07	
4	10.75	1.50		6.00	2.12	4.57	
5	13.00	1.75		7.44	2.38	5.66	
6	14.00	1.88		8.75	2.62	6.72	
8	16.50	2.19		10.75	3.00	8.72	
10	20.00	2.50		13.50	3.38	10.88	
12	22.00	2.62		15.75	3.62	12.88	
14	23.75	2.75		17.00	3.69	14.14	
16	27.00	3.00		19.50	4.19	16.16	
18	29.25	3.25		21.50	4.62	18.18	
20	32.00	3.50		24.00	5.00	20.20	
24	37.00	4.00		28.25	5.50	24.25	
		<b>WN</b>	<b>BLD</b>	<b>ASME B16.47 SERIES A</b>			
30	44.50	4.50	5.50	33.94			
36	51.75	4.88	6.38	40.62			
42	55.25	6.62	6.75	44.38			
48	62.75	7.44	7.69	50.75			
		<b>WN</b>	<b>BLD</b>	<b>ASME B16.47 SERIES B</b>			
30	40.25	4.94	5.00	31.75			
36	47.75	5.75	5.94	38.12			
42							
48							

Project Name: \_\_\_\_\_  
 Job #: \_\_\_\_\_

## CLASS 600 THREADED FLANGES

### ASME B16.9 & ASTM A234 WPB



Source:  Import  Domestic  Approved

### DIMENSIONS

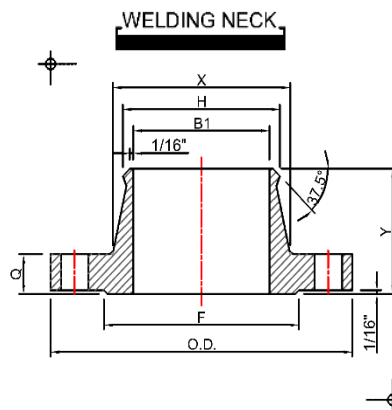
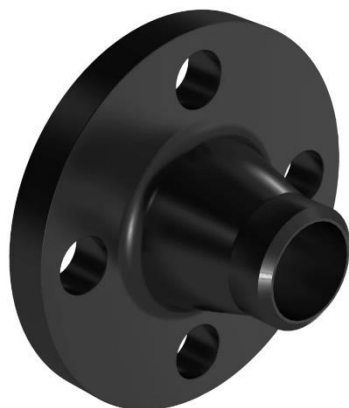
UOM: Inches/LBS

PIPE SIZE	OUTSIDE DIAMETER OF FLANGE (O.D.)	THICKNESS OF FLANGE (Min.) (Q)		DIAMETER OF HUB (X)	LENGTH THROUGH HUB	THREAD LENGTH (Min)	MIN. COUNTER BORE THREADED FLANGE
ASME B16.5							
1/2	3.75	0.56		1.50	0.88	0.62	0.93
3/4	4.62	0.62		1.88	1.00	0.62	1.14
1	4.88	0.69		2.12	1.06	0.69	1.41
1 1/4	5.25	0.81		2.50	1.12	0.81	1.75
1 1/2	6.12	0.88		2.75	1.25	0.88	1.99
2	6.50	1.00		3.31	1.44	1.12	2.50
2 1/2	7.50	1.12		3.94	1.62	1.25	3.00
3	8.25	1.25		4.62	1.81	1.38	3.63
3 1/2	9.00	1.38		5.25	1.94	1.56	4.13
4	10.75	1.50		6.00	2.12	1.62	4.63
5	13.00	1.75		7.44	2.38	1.88	5.69
6	14.00	1.88		8.75	2.62	2.00	6.75
8	16.50	2.19		10.75	3.00	2.25	8.75
10	20.00	2.50		13.50	3.38	2.56	10.88
12	22.00	2.62		15.75	3.62	2.75	12.94
14	23.75	2.75		17.00	3.69	2.88	14.19
16	27.00	3.00		19.50	4.19	3.06	16.19
18	29.25	3.25		21.50	4.62	3.12	18.19
20	32.00	3.50		24.00	5.00	3.25	20.19
24	37.00	4.00		28.25	5.50	3.62	24.19
		WN	BLD	ASME B16.47 SERIES A			
30	44.50	4.50	5.50	33.94			
36	51.75	4.88	6.38	40.62			
42	55.25	6.62	6.75	44.38			
48	62.75	7.44	7.69	50.75			
		WN	BLD	ASME B16.47 SERIES B			
30	40.25	4.94	5.00	31.75			
36	47.75	5.75	5.94	38.12			
42							
48							

**FLANGES 600 - THREADED**

Project Name: \_\_\_\_\_

Job #: \_\_\_\_\_

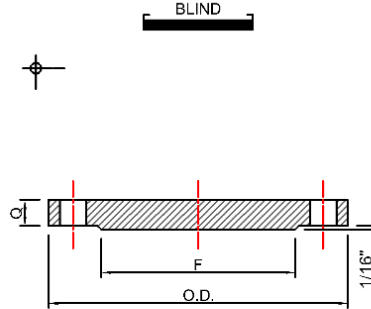
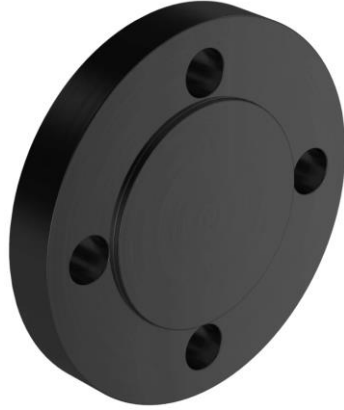
**CLASS 600 WELD NECK FLANGES****ASME B16.9 & ASTM A234 WPB**Source:  Import  Domestic  Approved**DIMENSIONS**

UOM: Inches/LBS

PIPE SIZE	OUTSIDE DIAMETER OF FLANGE (O.D.)	THICKNESS OF FLANGE (Min.) (Q)		DIAMETER OF HUB (X)	DIAMETER OF WELD NECK (B3)	LENGTH THROUGH HUB	BORE
<b>ASME B16.5</b>							
1/2	3.75	0.56		1.50	0.84	2.06	0.55
3/4	4.62	0.62		1.88	1.05	2.25	0.74
1	4.88	0.69		2.12	1.32	2.44	0.96
1 1/4	5.25	0.81		2.50	1.66	2.62	1.28
1 1/2	6.12	0.88		2.75	1.90	2.75	1.50
2	6.50	1.00		3.31	2.38	2.88	1.94
2 1/2	7.50	1.12		3.94	2.88	3.12	2.32
3	8.25	1.25		4.62	3.50	3.25	2.90
3 1/2	9.00	1.38		5.25	4.00	3.38	3.36
4	10.75	1.50		6.00	4.50	4.00	3.83
5	13.00	1.75		7.44	5.56	4.50	4.81
6	14.00	1.88		8.75	6.63	4.62	5.76
8	16.50	2.19		10.75	8.63	5.25	7.63
10	20.00	2.50		13.50	10.75	6.00	9.75
12	22.00	2.62		15.75	12.75	6.12	11.75
14	23.75	2.75		17.00	14.00	6.50	13.00
16	27.00	3.00		19.50	16.00	7.00	15.00
18	29.25	3.25		21.50	18.00	7.25	17.00
20	32.00	3.50		24.00	20.00	7.50	19.00
24	37.00	4.00		28.25	24.00	8.00	23.00
		<b>WN</b>	<b>BLD</b>	<b>ASME B16.47 SERIES A</b>			
30	44.50	4.50	5.50	33.94	30.00	9.75	
36	51.75	4.88	6.38	40.62	36.00	11.12	
42	55.25	6.62	6.75	44.38	42.00	11.00	
48	62.75	7.44	7.69	50.75	48.00	12.44	
		<b>WN</b>	<b>BLD</b>	<b>ASME B16.47 SERIES B</b>			
30	40.25	4.94	5.00	31.75	30.00	8.06	
36	47.75	5.75	5.94	38.12	36.00	9.56	
42							
48							

Project Name: \_\_\_\_\_  
 Job #: \_\_\_\_\_

**CLASS 600 BLIND FLANGES**  
**ASME B16.9 & ASTM A234 WPB**



Source:  Import  Domestic  Approved

**DIMENSIONS**

UOM: Inches/LBS

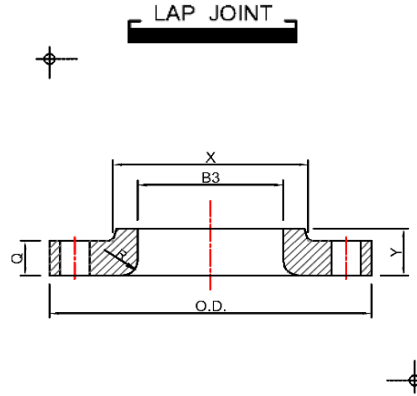
PIPE SIZE	OUTSIDE DIAMETER OF FLANGE (O.D.)	THICKNESS OF FLANGE (Min.) (Q)	
<b>ASME B16.5</b>			
1/2	3.75	0.56	
3/4	4.62	0.62	
1	4.88	0.69	
1 1/4	5.25	0.81	
1 1/2	6.12	0.88	
2	6.50	1.00	
2 1/2	7.50	1.12	
3	8.25	1.25	
3 1/2	9.00	1.38	
4	10.75	1.50	
5	13.00	1.75	
6	14.00	1.88	
8	16.50	2.19	
10	20.00	2.50	
12	22.00	2.62	
14	23.75	2.75	
16	27.00	3.00	
18	29.25	3.25	
20	32.00	3.50	
24	37.00	4.00	
		<b>WN</b>	<b>BLD</b>
30	44.50	4.50	5.50
36	51.75	4.88	6.38
42	55.25	6.62	6.75
48	62.75	7.44	7.69
		<b>WN</b>	<b>BLD</b>
30	40.25	4.94	5.00
36	47.75	5.75	5.94
42			
48			

FLANGES 600 - BLIND

Project Name: \_\_\_\_\_  
 Job #: \_\_\_\_\_

## CLASS 1500 LAP JOINT FLANGES

### ASME B16.9 & ASTM A234 WPB



Source:  Import  Domestic  Approved

### DIMENSIONS

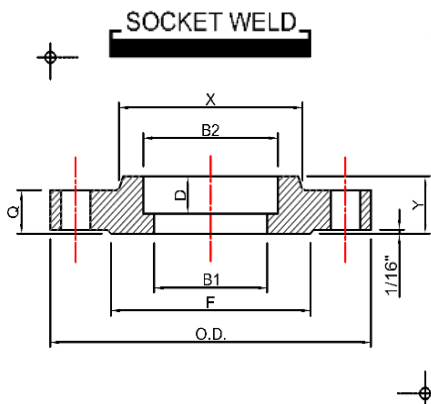
UOM: Inches/LBS

PIPE SIZE	OUTSIDE DIAMETER OF FLANGE (O.D.)	THICKNESS OF FLANGE (Min.) (Q)	DIAMETER OF HUB (X)	LENGTH THROUGH HUB	BORE	LAPPED FLANGE RADIUS (R)
<b>ASME B16.5</b>						
1/2	4.75	0.88	1.50	1.25	0.90	0.12
3/4	5.12	1.00	1.75	1.38	1.11	0.12
1	5.88	1.12	2.06	1.62	1.38	0.12
1 1/4	6.25	1.12	2.50	1.62	1.72	0.19
1 1/2	7.00	1.25	2.75	1.75	1.97	0.25
2	8.50	1.50	4.12	2.25	2.46	0.31
2 1/2	9.62	1.62	4.88	2.50	2.97	0.31
3	10.50	1.88	5.25	2.88	3.60	0.38
4	12.25	2.12	6.38	3.56	4.60	0.44
5	14.75	2.88	7.75	4.12	5.69	0.44
6	15.50	3.25	9.00	4.69	6.75	0.50
8	19.00	3.62	11.50	5.62	8.75	0.50
10	23.00	4.25	14.50	7.00	10.92	0.50
12	26.50	4.88	17.75	8.62	12.92	0.50
14	29.50	5.25	19.50	9.50	14.18	0.50
16	32.50	5.75	21.75	10.25	16.19	0.50
18	36.00	6.38	23.50	10.88	18.20	0.50
20	38.75	7.00	25.25	11.50	20.25	0.50
24	46.00	8.00	30.00	13.00	24.25	0.50

FLANGES 1500 - LAP JOINT

Project Name: \_\_\_\_\_

Job #: \_\_\_\_\_

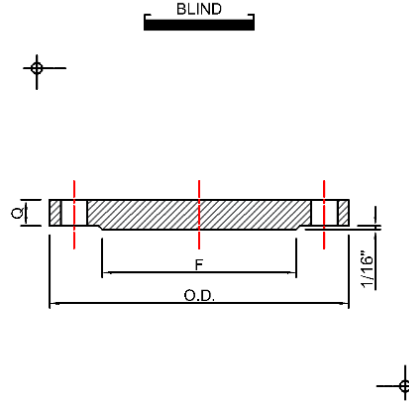
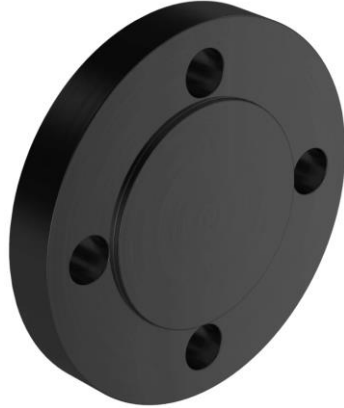
**CLASS 1500 SOCKET WELD FLANGES****ASME B16.9 & ASTM A234 WPB**Source:  Import  Domestic  Approved**DIMENSIONS**

UOM: Inches/LBS

PIPE SIZE	OUTSIDE DIAMETER OF FLANGE (O.D.)	THICKNESS OF FLANGE (Min.) (Q)	DIAMETER OF HUB (X)	LENGTH THROUGH HUB	BORE	DEPTH OF SOCKET (D)
<b>ASME B16.5</b>						
1/2	4.75	0.88	1.50	1.25	0.88	0.38
3/4	5.12	1.00	1.75	1.38	1.00	0.44
1	5.88	1.12	2.06	1.62	1.12	0.50
1 1/4	6.25	1.12	2.50	1.62	1.19	0.56
1 1/2	7.00	1.25	2.75	1.75	1.25	0.62
2	8.50	1.50	4.12	2.25	1.50	0.69
2 1/2	9.62	1.62	4.88	2.50	1.88	0.75
3	10.50	1.88	5.25			
4	12.25	2.12	6.38			
5	14.75	2.88	7.75			
6	15.50	3.25	9.00			
8	19.00	3.62	11.50			
10	23.00	4.25	14.50			
12	26.50	4.88	17.75			
14	29.50	5.25	19.50			
16	32.50	5.75	21.75			
18	36.00	6.38	23.50			
20	38.75	7.00	25.25			
24	46.00	8.00	30.00			

Project Name: \_\_\_\_\_  
 Job #: \_\_\_\_\_

**CLASS 1500 BLIND FLANGES**  
**ASME B16.9 & ASTM A234 WPB**



Source:  Import  Domestic  Approved

**DIMENSIONS**

UOM: Inches/LBS

PIPE SIZE	OUTSIDE DIAMETER OF FLANGE (O.D.)	THICKNESS OF FLANGE (Min.) (Q)
<b>ASME B16.5</b>		
1/2	4.75	0.88
3/4	5.12	1.00
1	5.88	1.12
1 1/4	6.25	1.12
1 1/2	7.00	1.25
2	8.50	1.50
2 1/2	9.62	1.62
3	10.50	1.88
4	12.25	2.12
5	14.75	2.88
6	15.50	3.25
8	19.00	3.62
10	23.00	4.25
12	26.50	4.88
14	29.50	5.25
16	32.50	5.75
18	36.00	6.38
20	38.75	7.00
24	46.00	8.00

FLANGES 1500 - BLIND

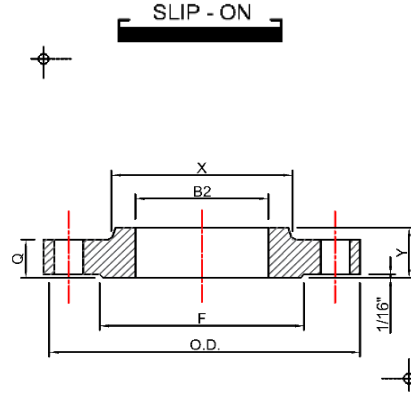
Project Name: \_\_\_\_\_

Job #: \_\_\_\_\_

**CLASS 1500 SLIP - ON FLANGES**

**ASME B16.9 & ASTM A234 WPB**

FLANGES 1500 - SLIP - ON



Source:  Import  Domestic  Approved

**DIMENSIONS**

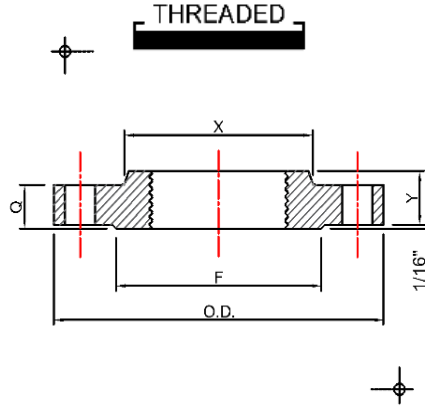
UOM: Inches/LBS

PIPE SIZE	OUTSIDE DIAMETER OF FLANGE (O.D.)	THICKNESS OF FLANGE (Min.) (Q)	DIAMETER OF HUB (X)	LENGTH THROUGH HUB	BORE
<b>ASME B16.5</b>					
1/2	4.75	0.88	1.50	1.25	0.88
3/4	5.12	1.00	1.75	1.38	1.00
1	5.88	1.12	2.06	1.62	1.12
1 1/4	6.25	1.12	2.50	1.62	1.19
1 1/2	7.00	1.25	2.75	1.75	1.25
2	8.50	1.50	4.12	2.25	1.50
2 1/2	9.62	1.62	4.88	2.50	1.88
3	10.50	1.88	5.25		
4	12.25	2.12	6.38		
5	14.75	2.88	7.75		
6	15.50	3.25	9.00		
8	19.00	3.62	11.50		
10	23.00	4.25	14.50		
12	26.50	4.88	17.75		
14	29.50	5.25	19.50		
16	32.50	5.75	21.75		
18	36.00	6.38	23.50		
20	38.75	7.00	25.25		
24	46.00	8.00	30.00		

Project Name: \_\_\_\_\_  
 Job #: \_\_\_\_\_

## CLASS 1500 THREADED FLANGES

ASME B16.9 & ASTM A234 WPB



Source:  Import  Domestic  Approved

### DIMENSIONS

UOM: Inches/LBS

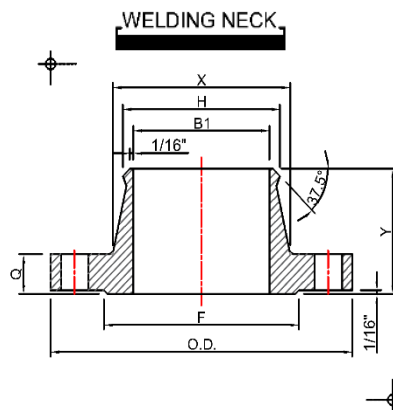
PIPE SIZE	OUTSIDE DIAMETER OF FLANGE (O.D.)	THICKNESS OF FLANGE (Min.) (Q)	DIAMETER OF HUB (X)	LENGTH THROUGH HUB	THREAD LENGTH (Min)	MIN. COUNTER BORE THREADED FLANGE
ASME B16.5						
1/2	4.75	0.88	1.50	1.25	0.88	0.93
3/4	5.12	1.00	1.75	1.38	1.00	1.14
1	5.88	1.12	2.06	1.62	1.12	1.41
1 1/4	6.25	1.12	2.50	1.62	1.19	1.75
1 1/2	7.00	1.25	2.75	1.75	1.25	1.99
2	8.50	1.50	4.12	2.25	1.50	2.50
2 1/2	9.62	1.62	4.88	2.50	1.88	3.00
3	10.50	1.88	5.25			
4	12.25	2.12	6.38			
5	14.75	2.88	7.75			
6	15.50	3.25	9.00			
8	19.00	3.62	11.50			
10	23.00	4.25	14.50			
12	26.50	4.88	17.75			
14	29.50	5.25	19.50			
16	32.50	5.75	21.75			
18	36.00	6.38	23.50			
20	38.75	7.00	25.25			
24	46.00	8.00	30.00			

FLANGES 1500 - THREADED



Project Name: \_\_\_\_\_

Job #: \_\_\_\_\_

**CLASS 1500 WELD NECK FLANGES****ASME B16.9 & ASTM A234 WPB**Source:  Import  Domestic  Approved**DIMENSIONS**

UOM: Inches/LBS

PIPE SIZE	OUTSIDE DIAMETER OF FLANGE (O.D.)	THICKNESS OF FLANGE (Min.) (Q)	DIAMETER OF HUB (X)	DIAMETER OF WELD NECK (B3)	LENGTH THROUGH HUB	BORE
<b>ASME B16.5</b>						
1/2	4.75	0.88	1.50	0.84	2.38	TO BE SPECIFIED BY THE PURCHASER
3/4	5.12	1.00	1.75	1.05	2.75	
1	5.88	1.12	2.06	1.32	2.88	
1 1/4	6.25	1.12	2.50	1.66	2.88	
1 1/2	7.00	1.25	2.75	1.90	3.25	
2	8.50	1.50	4.12	2.38	4.00	
2 1/2	9.62	1.62	4.88	2.88	4.12	
3	10.50	1.88	5.25	3.50	4.62	
4	12.25	2.12	6.38	4.50	4.88	
5	14.75	2.88	7.75	5.56	6.12	
6	15.50	3.25	9.00	6.63	6.75	
8	19.00	3.62	11.50	8.63	8.38	
10	23.00	4.25	14.50	10.75	10.00	
12	26.50	4.88	17.75	12.75	11.12	
14	29.50	5.25	19.50	14.00	11.75	
16	32.50	5.75	21.75	16.00	12.25	
18	36.00	6.38	23.50	18.00	12.88	
20	38.75	7.00	25.25	20.00	14.00	
24	46.00	8.00	30.00	24.00	16.00	